

# Sutton Mill

## Key Facts

**When:** During the 18<sup>th</sup> Century.

**Where:** In Sutton, St. Helens

**What:** It was a corn water mill powered by Pendlebury/Sutton Mill Dam.

**How:** They used the flow of water to turn a wheel, make the machinery work and grind the corn.

**Why:** They used Sutton Mill Dam to power the Mill so that they could make corn.

## Now:

- Sutton Mill Dam is still there today.
- There are streets named after it like Mill Lane.
- There is a pub named after it called the Millhouse.

## Timeline

Sutton Mill has not been around for over a century

Start: The exact dates of Sutton Mill's start is unknown.

1784 to 1789: Daniel Lamb was a miller at Sutton Corn Mill.

1816: Daniel Lamb died but his sons and family continued to work on the Mill.

1841: The Lamb family continued to work on the Mill and were listed as the millers of Sutton.

1851-1856- There was a change in ownership but the Lamb family continued to work there.

1871: John Rose and his family took over the Mill after some of the Lamb family changed careers (to be engine drivers on the railway) and a few passed away.

1881: James Rose occupied the Mill and won a prize for the neatest and cleanest tradesman.

1894: The reason is unknown but by this year the Mill became disused.

1950s: The Mill remained on site (as photographed in 1910) until it was removed in the 1950s.

## Key Vocabulary

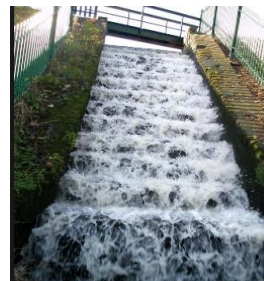
Mill	A building with machines to grind or cut.
Canal	A waterway made for boats
Dam	A large wall holding back water
Demolished	Pulled or knocked down
Flow	A steady stream
Decade	10 years
Century	100 years
Significant	important



Looking up Mill Lane towards where Mill Brow and Sutton Mill was located. 1900 vs Now.



Sutton Mill Dam including the waterfall in the background. The first photograph also shows Sutton Mill in the corner. (1910)



Now the water fall is called "the wash"

The use of Mill Dam has changed. The dam is now much wider and looks different.

Sutton Mill Dam Wildlife park was made in 1987.

There are no photographs of the Corn Mill now as it has been removed.